



3 Peninsula Heights 27 Bessborough Road, Poole, Dorset, BH13 7JS

£1,550

TO LET



EST. 1977

KEY DRUMMOND

ESTATE AGENTS

THE PROPERTY

Beautifully presented ground floor apartment situated in Bessborough Road, Canford Cliffs with a short walk to the shops, beach and easy bus routes.

Large, modern kitchen/diner, spacious living room with patio doors leading to private outdoor space.

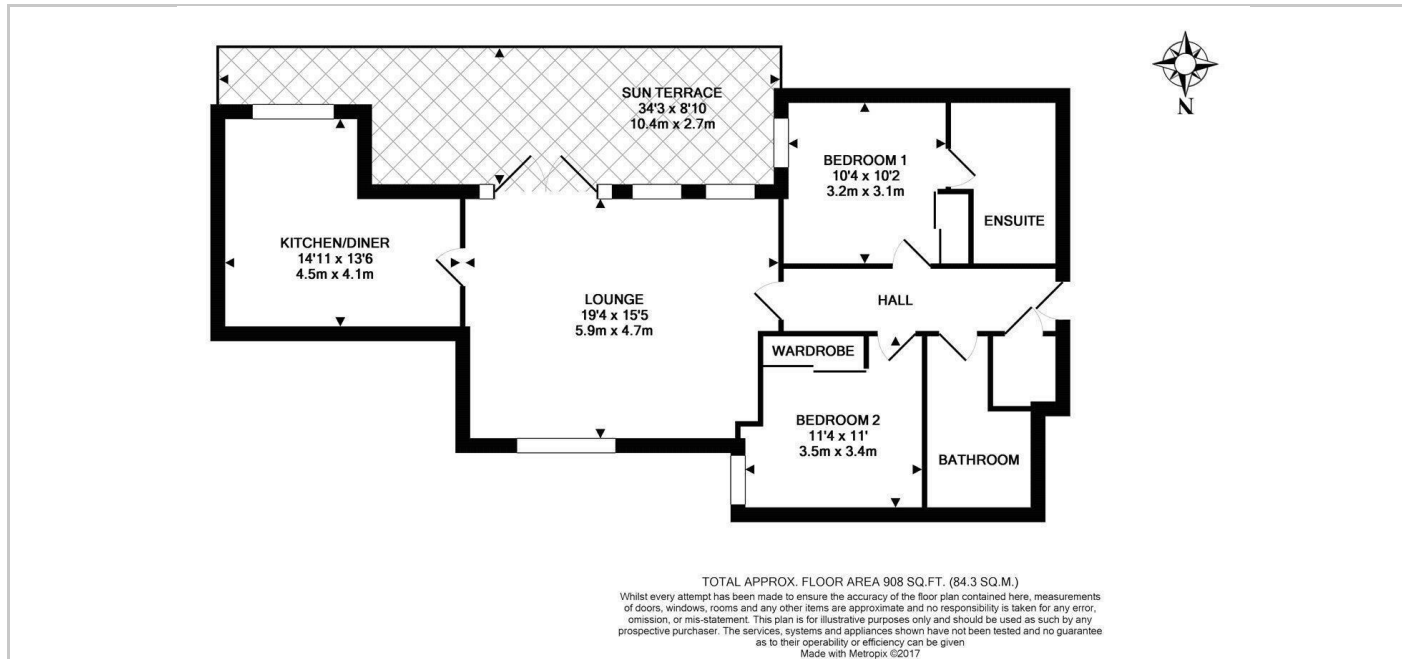
Two double bedrooms, master with large en suite shower room. Both bedrooms complete with fitted wardrobes. Main family bathroom.

Outside benefits from its own patio garden, allocated parking for one car in a gated development.

Available Now on an unfurnished basis. Call today to arrange a viewing.

Council Tax - E
EPC Rating - C

SITUATION



Directions